



Digital Keypad User's Manual

Model: LM105

www.WholesaleGateOpener.com

Digital Keypad (Model: LM105)

Installation and operating instructions

Thank you for purchasing the Digital Keypad (LM105). Be sure to read the directions carefully and completely. Before permanently mounting the keypad, please program the keypad and test its range.

SAFETY NOTE: Never install the keypad where a person can reach through the gate to activate it, or where a person can touch the gate while activating the keypad. The recommended minimum distance between the gate and keypad is 10ft (3 meters).

Features of the Keypad

*All entry codes are six (6) digits in length. Factory default code is 888888.

*The entry code can be changed easy.

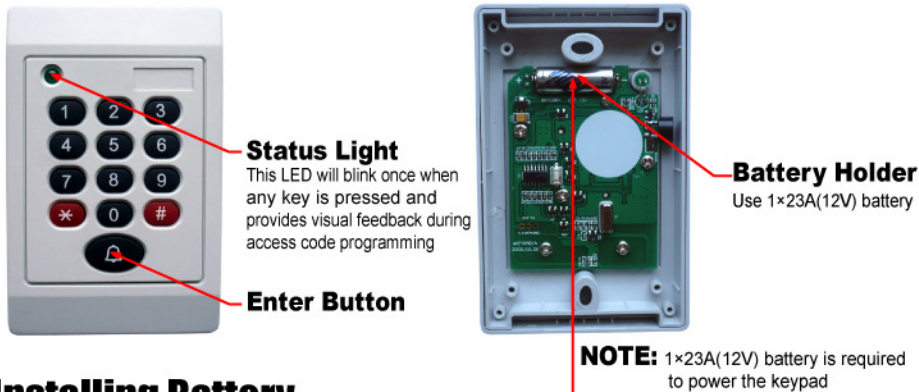
*AS a safety feature, the gate will stop after pressing Enter Button while the gate is opening or closing. The entry code will has to be use again to move the gate.

*The keypad face will light up and the beeper will beep at the press of any key.

*Your entry codes will remain stored in memory even when the batteries go dead. The keypad will remember your entry codes unless transmitter code of keypad be learnt again.

*When you forget the entry code, it will has to be erased through learn transmitter code. The entry code will return to factory default code 888888.

Keypad Description



Installing Battery

Step 1: Open the keypad and separate the keypad from its housing.

Step 2: Install 1x23A(12V) battery.

Step 3: Replace the keypad to its housing after install the battery.

“Learn” Transmitter code

IMPORTANT; Make sure the transmitter operates the gate opener.

*Turn off the gate opener so that there is no unintended operates the gate during the learning process.

*First please set the control board in PC position (Digital Display indicates “PC”), Press and release “INC” button ,the Digital Display will indicate “Ln”. (Ref to Installation and Operation Manual Page.24). Then press the Enter Button. The “PC” will be show on the Digital Display after “Ln” flashing 4 seconds, now the keypad has been learnt success. The entry code is factory default code ie : 888888 now.

How to use the Keypad for opening the gate.

- (1) Press and release “*” button then enter the entry code. (For example 888888).
- (2) Press the “Enter” button to open or close the gate.
- (3) The gate will stop after pressing Enter Button while the gate is moving. The entry code will has to be use again to re-start the gate.
- (4) If an error condition has occurred, Status light is on and beeper sound for more 2 seconds before returning to normal operation. Please re-enter the entry code.

NOTE: When you enter the entry code, the code button should be pressed within 1 second.

NOTE: If the Keypad is installed outside of the gate to open the gate, and no Keypad is installed inside of the gate, we strongly recommend you set the auto-close function in circuit board in control box . Refer to Installation and Operation Manual page 23.

Programming the new entry code

- (1) Press and release “*” button then enter the factory default code (888888).
- (2) Press and release “#” before enter the new entry code, then press and release “#” again to store the new entry code.
- (3) If an error condition has occurred, Status light is on and beeper sound for more 2 seconds before returning to normal operation. Please re-program.



LockMaster™
16915 SE 272nd Street, Suite 100-105
Covington WA 98042 USA
sales@WholesaleGateOpener.com
www.WholesaleGateOpener.com
©2005-2009 LockMaster All Rights Reserved